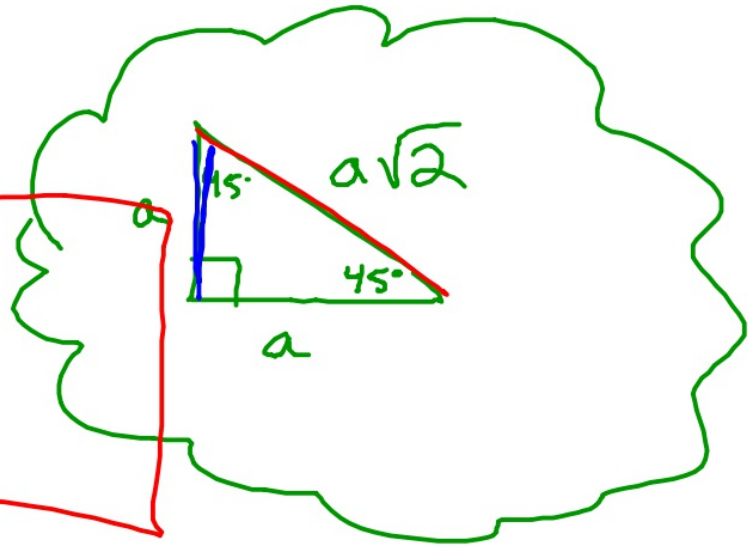
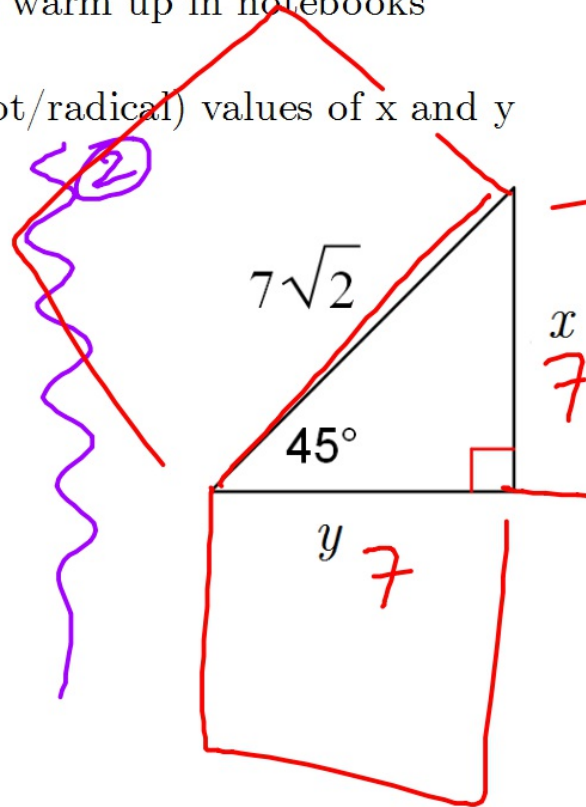
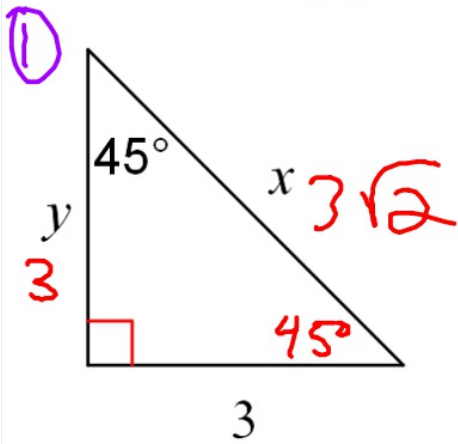


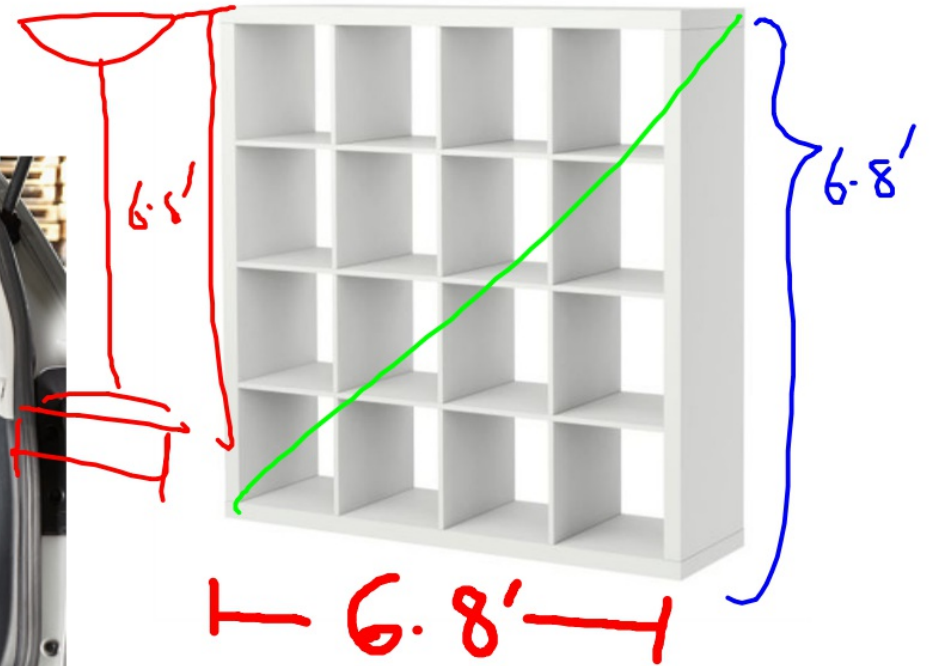
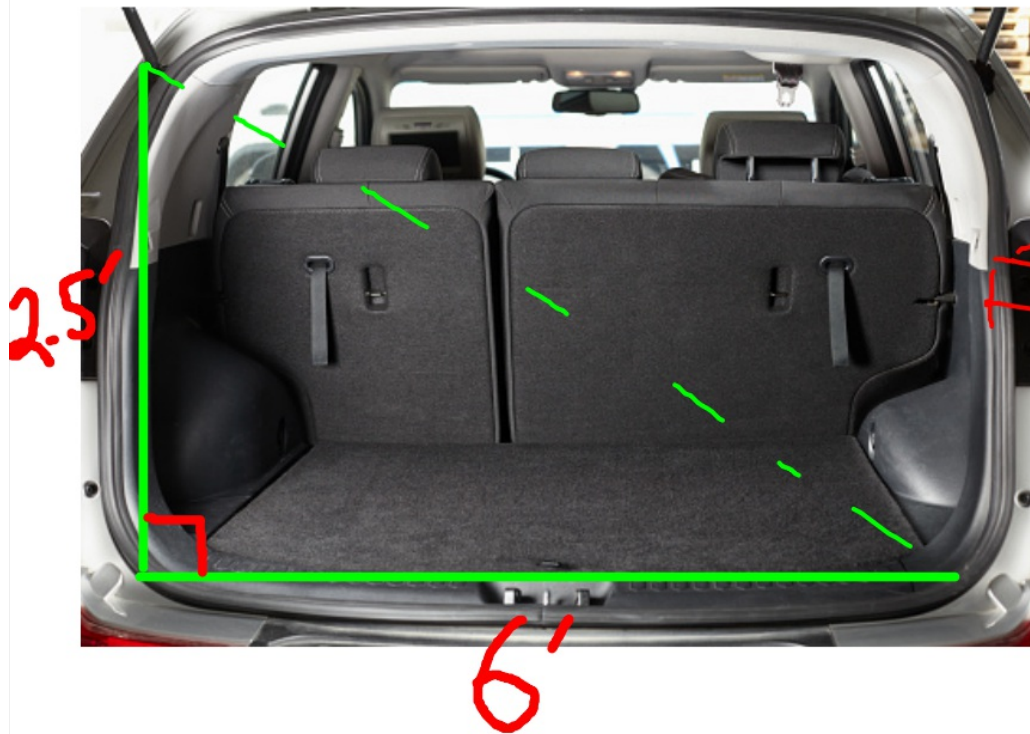
Good afternoon: please do warm up in notebooks

Find the exact (square root/radical) values of x and y



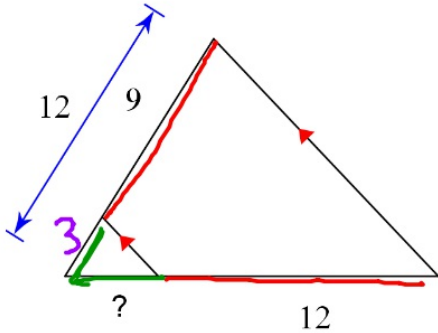
Warm up 2!

Will this thing fit?

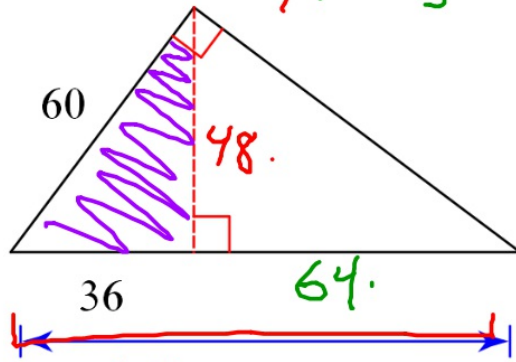


Questions ahead of the assessment?

①

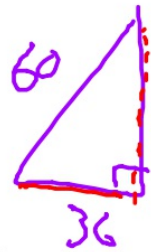
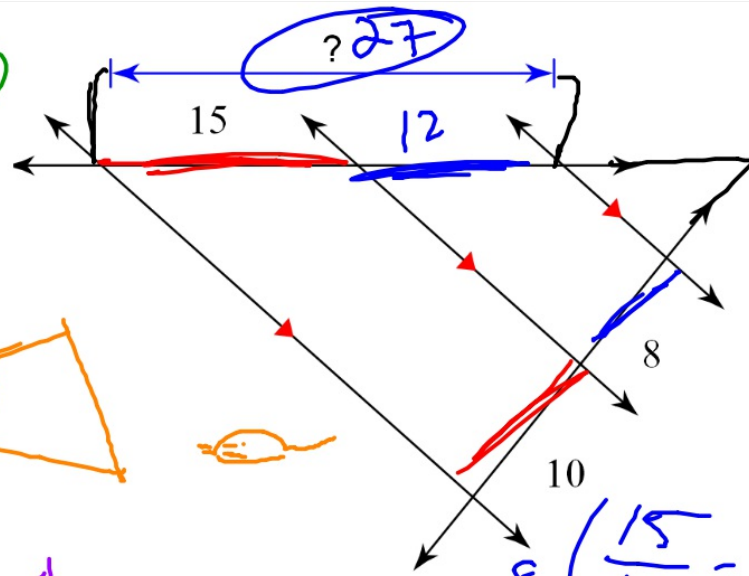


②



$$\frac{12}{9} = \frac{x}{3}$$

③



$$36^2 + b^2 = 60^2$$

$$b = 48$$

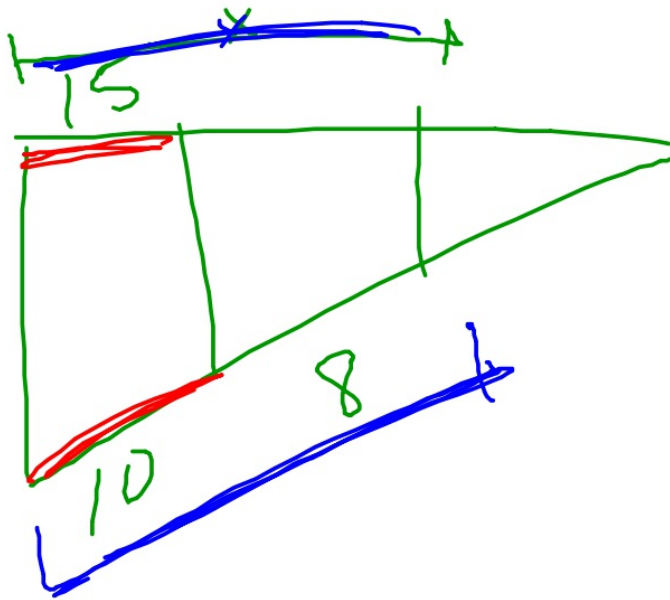
$$\left(\frac{15}{10} = \frac{x}{8} \right)$$

$$\underline{\underline{12 = x}}$$

$$\underline{\underline{c = 64}}$$

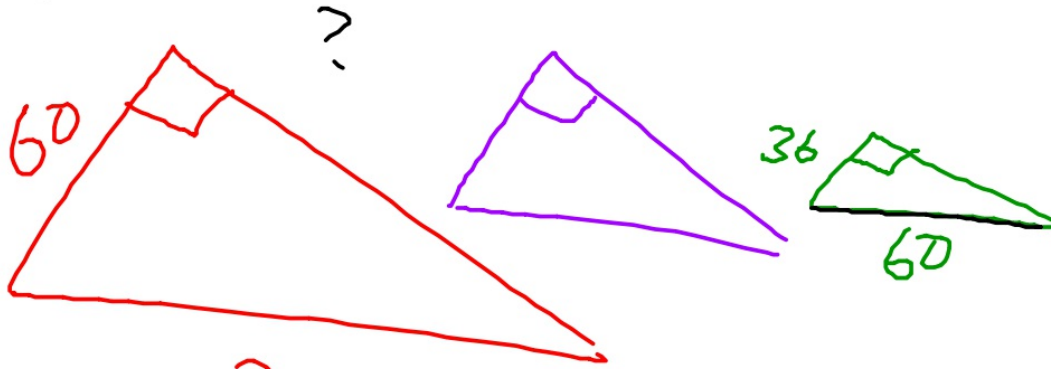
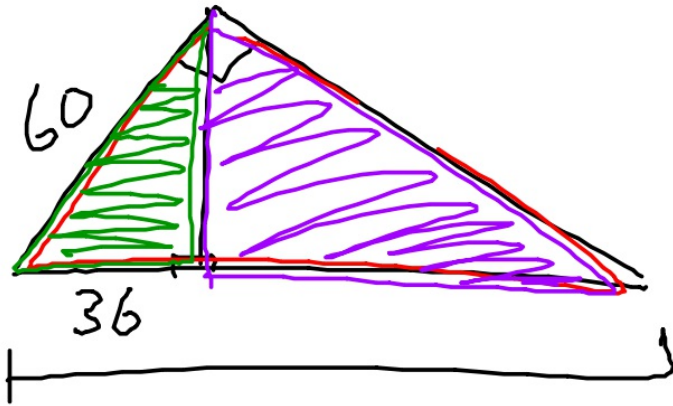
$$48^2 = c \cdot 36$$

$$\leftarrow \frac{2304}{36} = \frac{50c}{36}$$



$$\frac{15}{10}$$

$$\frac{?}{18}$$



$$\frac{36}{60} = \frac{60}{?}$$

Assessment

- Be sure name is on it
- Use a cover sheet
- Show all work!
- Pick up mini hand out of Practice ACT questions, work on it until everyone's finished :)

FIX NUMBER 3: Last sentence should read: How TALL is the screen?

1,2

