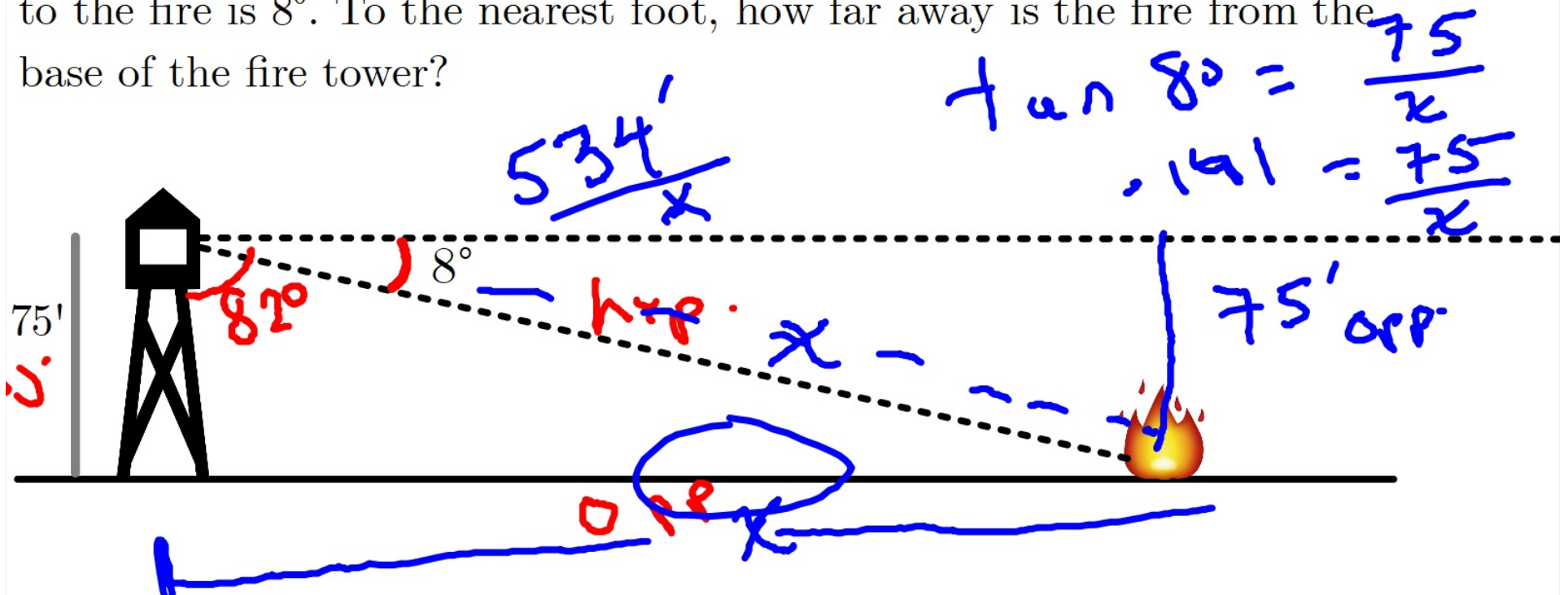


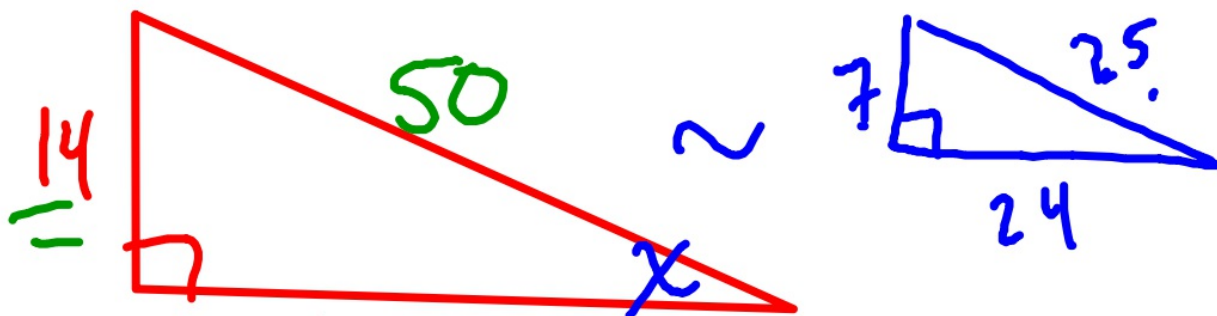
Good morning: warm up in notes

(we will randomize when bell rings)

Standing on a 75 foot tall fire tower, you spot a fire off in the distance. With your clinometer, you measure that the angle of depression down to the fire is 8° . To the nearest foot, how far away is the fire from the base of the fire tower?

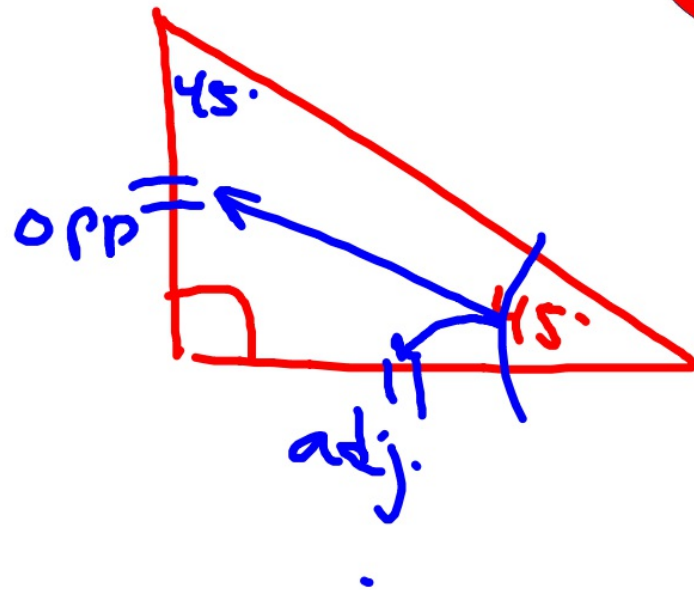


A right triangle has legs with lengths 14 and 48. Find $\sin X$ where X is the smallest angle in the triangle.

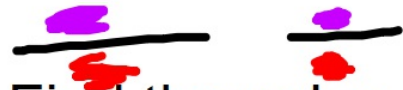


$$\sin X = \frac{14}{50}$$

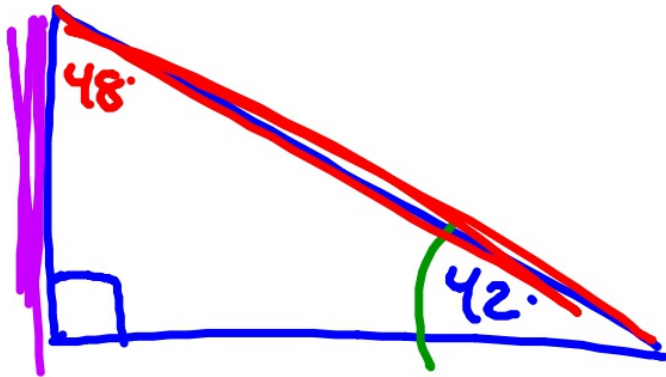
What is tan 45?



$$\sin 42^\circ = \cos X^\circ$$



Find the value of X.



Assessment

- do your best
- use your divider
- DEGREE MODE
- use at least 2 decimal places for trig ratios

Finished?

Complete self assessment and honor pledge,
turn in paper and divider

HW:

watch and take notes on Law of Sines video at mgeo.weebly.com

