

Good afternoon: warm up in notebooks

Are they similar? If so, give the reason (AA~, SSS~, SAS~) and complete the similarity statement

1.

$\frac{65}{26} = 2.5$
 $\frac{35}{14} = 2.5$
 $\frac{50}{20} = 2.5$

$\triangle LMN \sim \triangle LDC$ (SSS~)

2.

$\frac{30}{20} = 1.5$
 $\frac{15}{10} = 1.5$

$\triangle HGF \sim \triangle HSR$ (SAS~)

3.

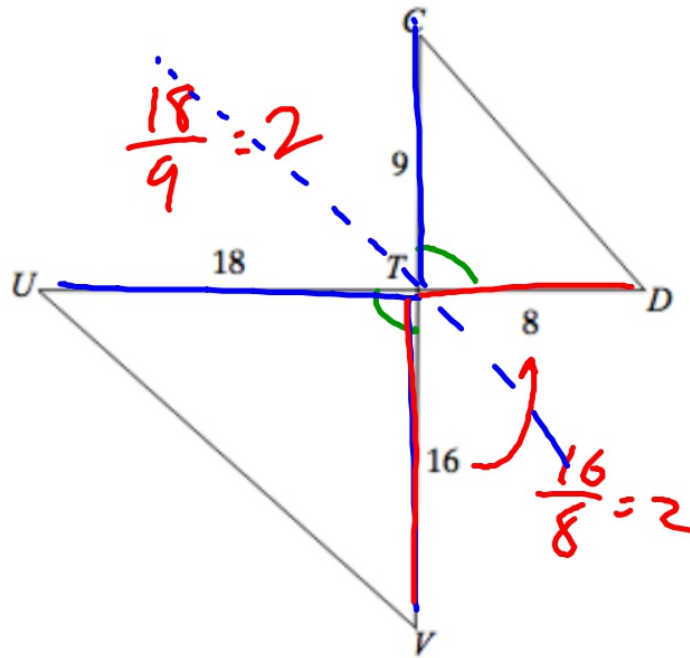
$\frac{30}{20} = 1.5$
 $\frac{15}{10} = 1.5$

$\triangle CDE \sim \triangle CLM$ (AA~)

Reminders:

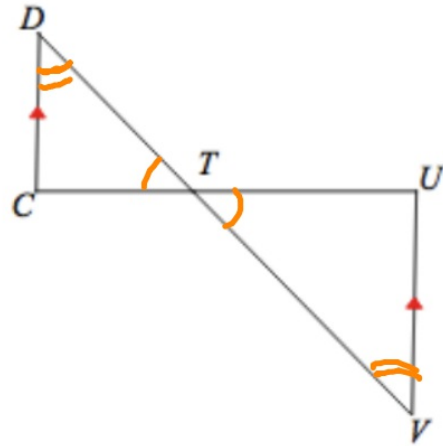
- reassess in any DS this week
- tutoring tomorrow 4-5p

Are they similar?



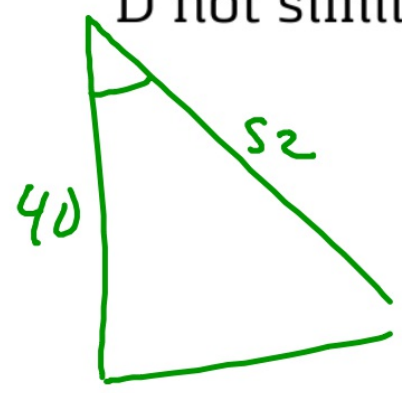
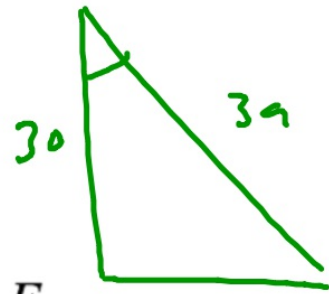
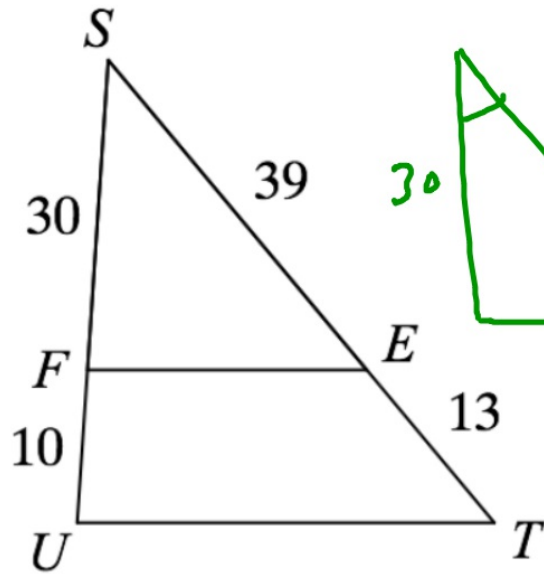
- A yes by SSS~
- B yes by AA~
- C yes by SAS~
- D not similar

Are they similar?



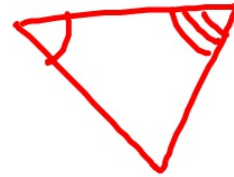
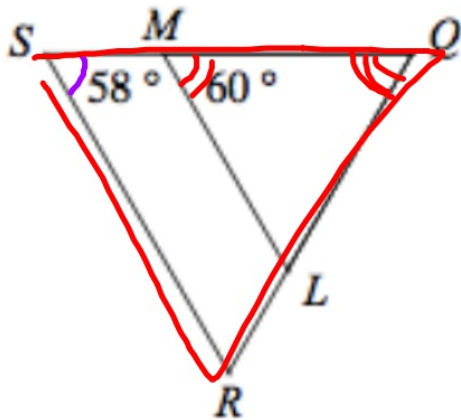
- A yes by SSS~
- B yes by AA~
- C yes by SAS~
- D not similar

Are they similar?



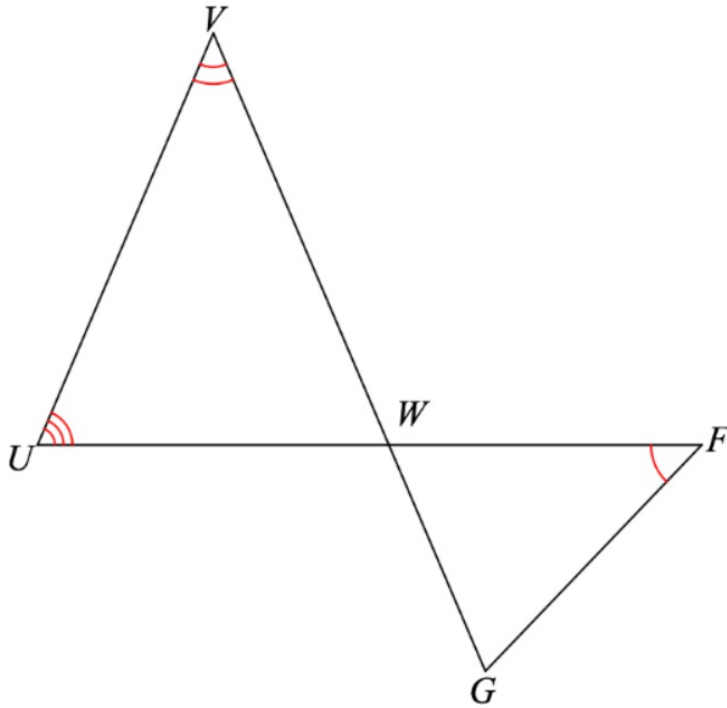
- A yes by SSS~
- B yes by AA~
- C yes by SAS~
- D not similar

Are they similar?



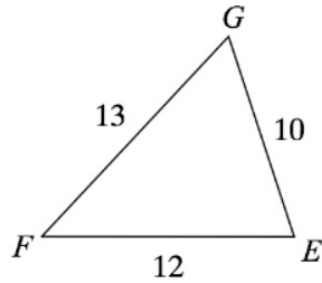
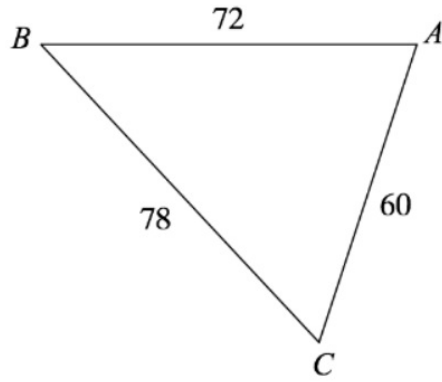
- ~~A~~ yes by SSS~
- B yes by AA~
- ~~C~~ yes by SAS~
- D not similar

Are they similar?



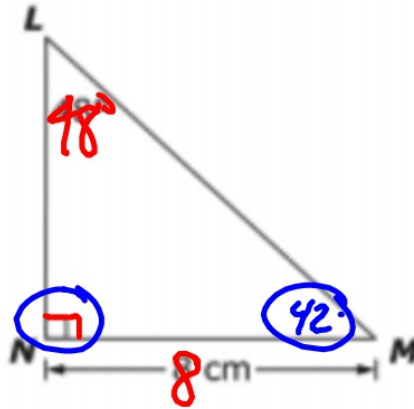
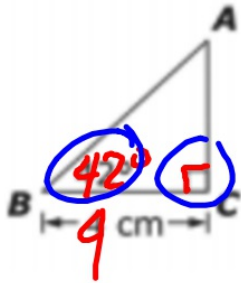
- A yes by SSS~
- B yes by AA~
- C yes by SAS~
- ~~D not similar~~

Are they similar?



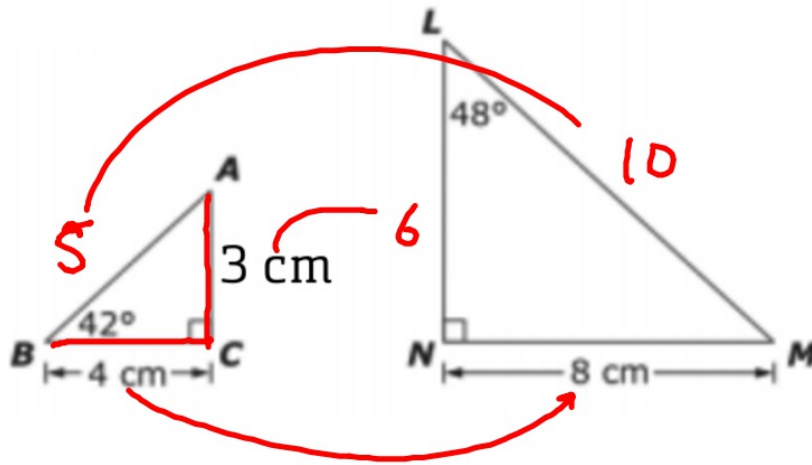
- A yes by SSS~
- B yes by AA~
- C yes by SAS~
- D not similar

Are they similar?



- A yes by SSS~
- B yes by AA~
- C yes by SAS~
- D not similar

Find the length of LM



- A 5 cm
- B 10 cm
- C 16 cm
- D 14 cm
- E I don't know yet

A rectangle is dilated to form a new rectangle. The new rectangle has an area 9 times the original. If the perimeter of the original rectangle was 10 cm, what is the perimeter of the new rectangle?

- A 90 cm
- B 30 cm
- C 900 cm
- D 300 cm
- E I don't know yet

Practice Assessment

Finish it, check solutions at help videos at
mgeo.weebly.com

Assessment next class