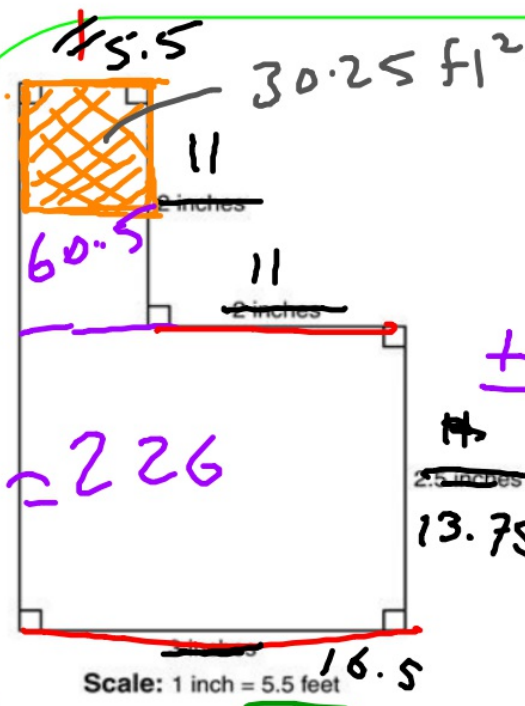


Good afternoon: staple warm up to notes then solve:



287 ft<sup>2</sup>

This is the scale model of a room in one's house. The person is replacing their carpet which costs \$1.75 per square foot of carpet, \$0.23 per square foot of padding, and \$1.10 per square foot of labor.

+ \$3.08 total / ft<sup>2</sup>.

\$885.12

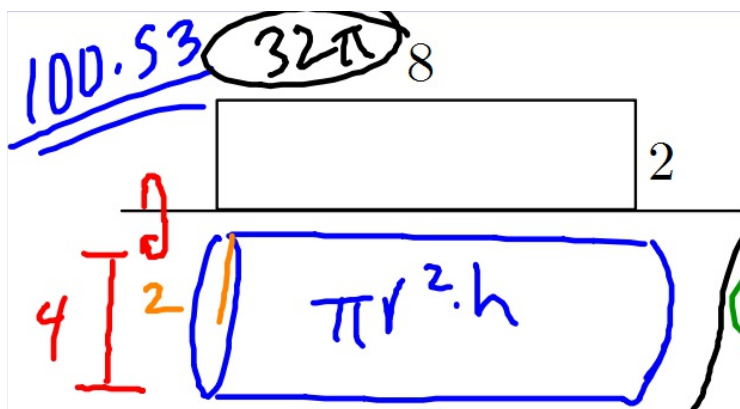
How much will it cost to replace the carpet?

the answer is NOT \$160.93

Reminders:

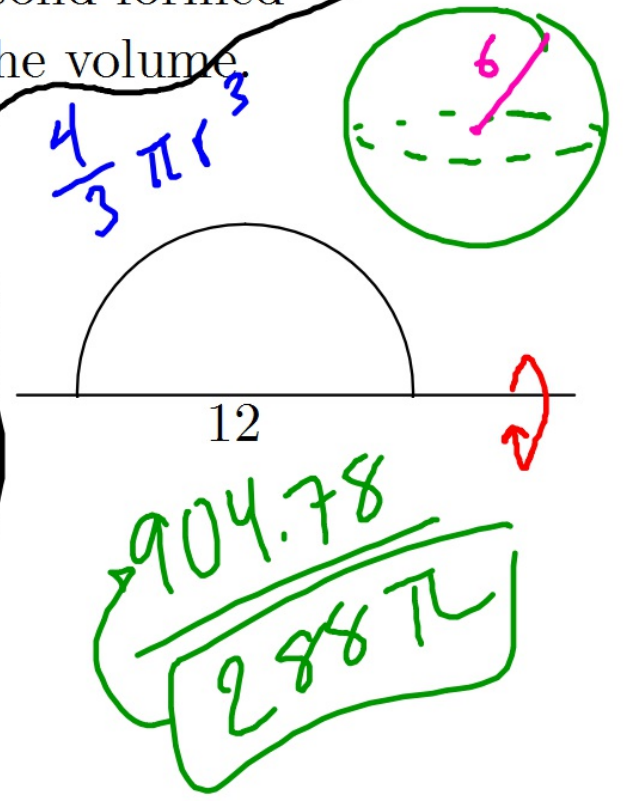
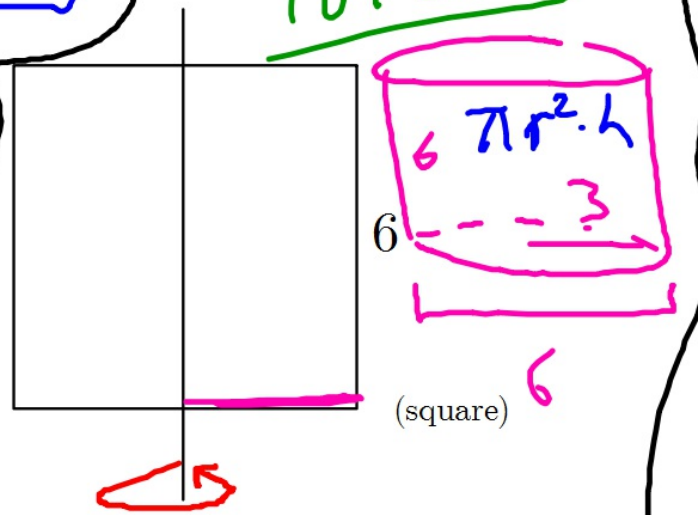
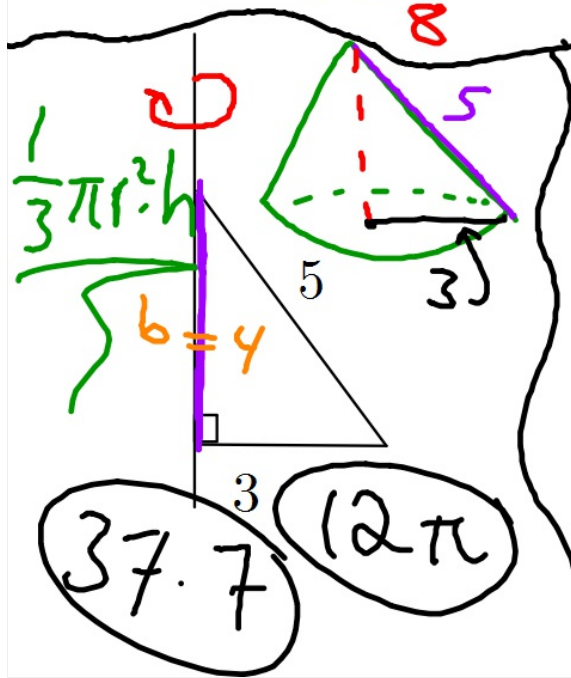
online EOC starts 2 weeks from **TODAY**  
know all formulas on quizlet by then!

retakes available in DS next wk



Sketch the figures as shown  
 Sketch the solid formed  
 Then find the volume.

$(54\pi)$   
169.65



EOC review!

Tuesday Apr 18:

congruence topics assessment,  
similarity/trig topics review


Thursday Apr 20

similarity/trig topics assessment,  
graphing/coordinates review

Monday Apr 24

graphing/coordinates assessment

Tuesday Apr 25

 Formulas quiz

Retakes, review, EOC study period

Thursday Apr 27: SHOWTIME!

Assessment on  
radians, cross-sections,  
and revolution  
will be pushed to after  
EOC -\_-

Practice problems on...

transformations, triangle congruence, proof, and quadrilaterals

Jigsaw groups

Each person at your table picks 1 section out of the 4  
(no doubling up)

Expert Groups huddle together and work on that section

Return back to home groups and Section 1 expert explains  
how to do their section, then Section 2 expert does theirs, etc.

Finish up/study the solutions and resources on [mgeo.weebly.com](http://mgeo.weebly.com)

Will be tested on these topics on Tuesday (next time we have class)

(it will look very ~)