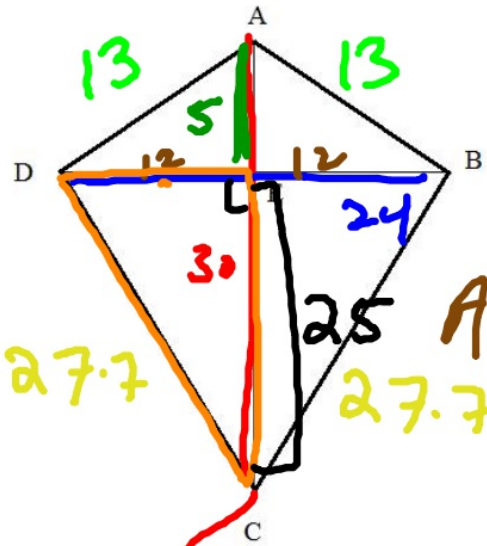


# Kite Practice (notes)



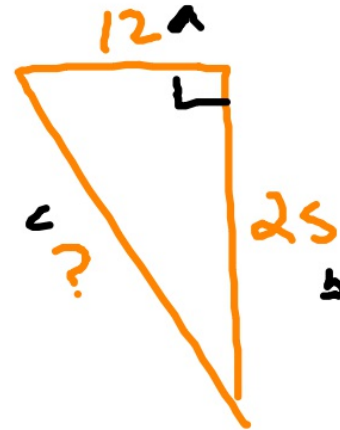
AC=30  
AE=5  
DB=24

$$A = \frac{1}{2} \cdot d_1 \cdot d_2$$

$$\frac{1}{2} \cdot 30 \cdot 24$$

360

Find the area and the perimeter of the kite.



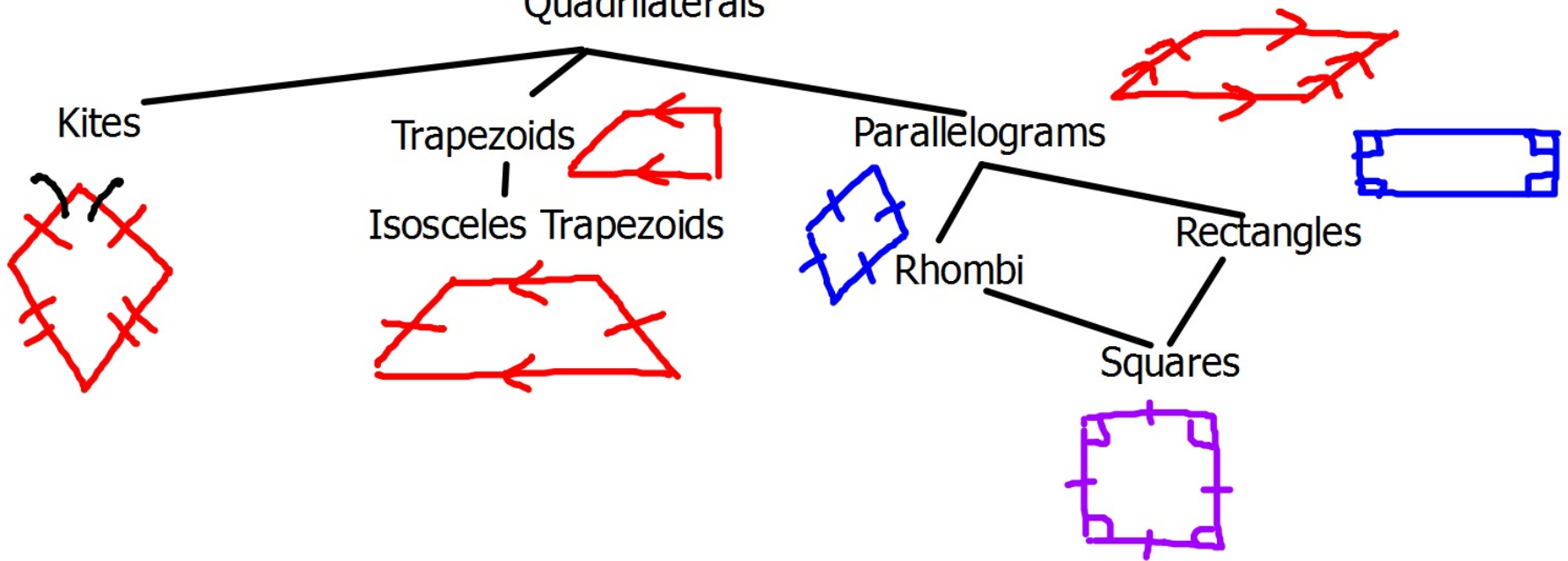
$$a^2 + b^2 = c^2$$

370



# Quadrilaterals Taxonomy

## Quadrilaterals



Quadrilaterals

kite

Trapez.

Isos.  
Trap.

p-gram

Rhombi

Sq.

Rect.

Square

Rectangle

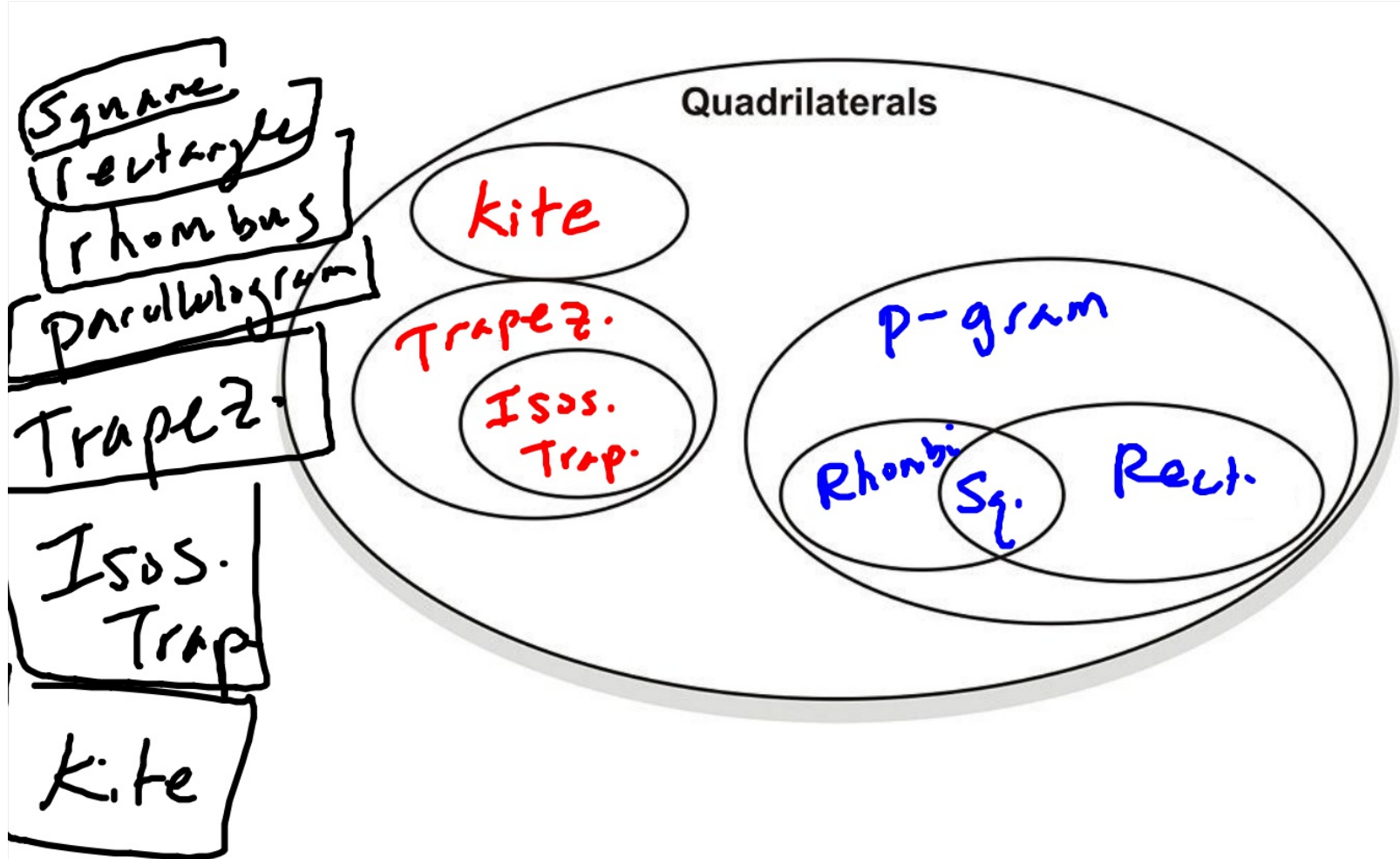
Rhombus

Parallelogram

Trapez.

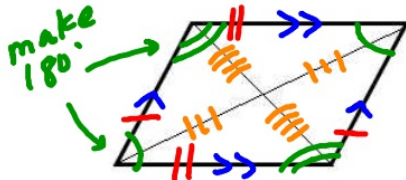
Isos.  
Trap

kite



Parallelogram	Parallelogram
	Rectangle
	Rhombus
	Square

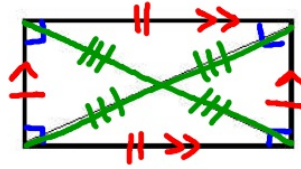
# Parallelograms



■ Def: A quadrilateral with 2 pairs of parallel sides

Properties

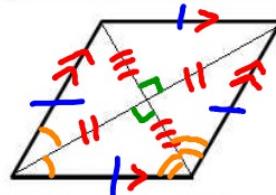
- Opposite sides congruent
- Opposite angles congruent
- Consecutive angles supplementary
- Diagonals bisect each other



■ Def: A quadrilateral with 4 right angles

Properties

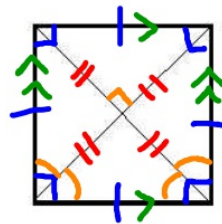
- All parallelogram properties apply
- Diagonals are congruent



■ Def: A quadrilateral with 4 congruent sides

Properties

- All parallelogram properties apply
- Diagonals are perpendicular
- Diagonals are angle bisectors



■ Def: A quadrilateral with 4 congruent sides and 4 right angles

Properties

- A square is a parallelogram, rectangle, and rhombus simultaneously, so all above properties apply.

HW

p. 215 #11,12 [CO-C11a and C11b]

p. 216 #6,13

~~p. 228 #20,25~~