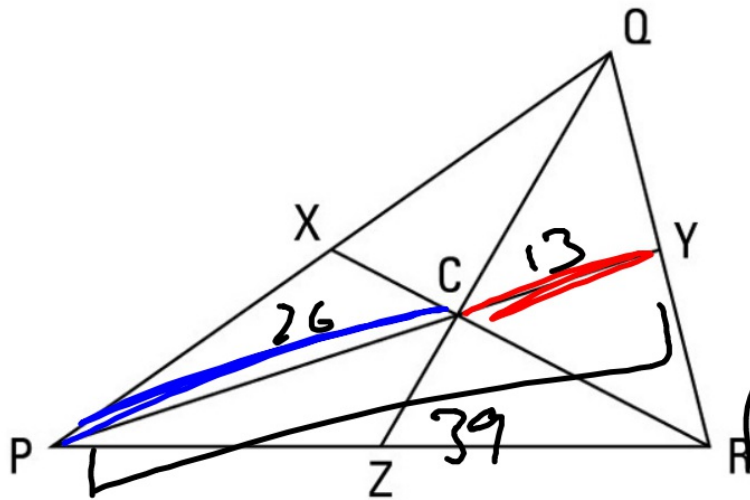


Good morning and welcome back: please do warm up in notebooks



RX, PY, and QZ are medians

$$\underline{PC=3a+5} \quad \text{and} \quad \underline{CY=2a-1}$$

Find the value of **a** and the length of PY.

$$2(2a-1) = 3a+5$$

$$4a-2 = 3a+5$$

$$\underline{a=7}$$

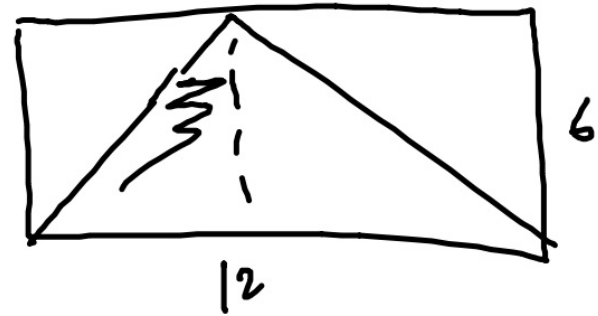
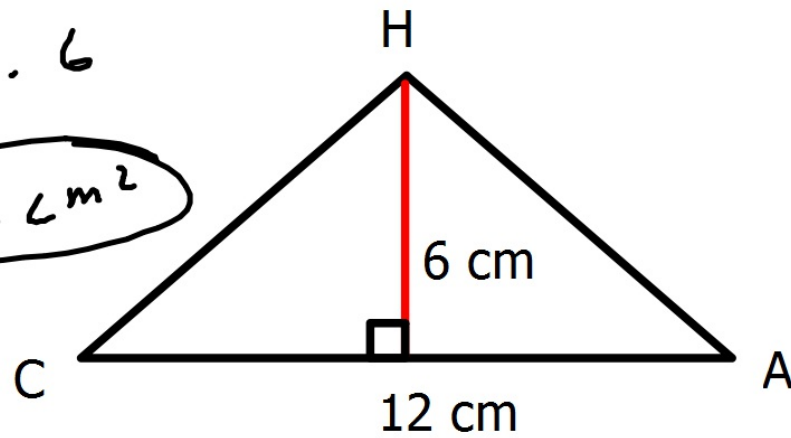
Reminders:

- Assessment next class
- Tutoring tomorrow 4p

2nd warm up: Find the area of triangle CHA

$$\frac{1}{2} \cdot 12 \cdot 6$$

$$36 \text{ cm}^2$$



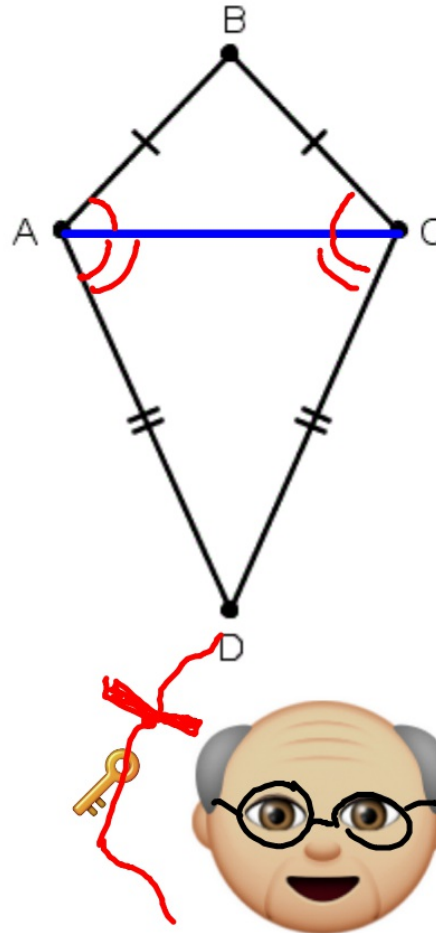
## Kites! (notes)


What is a kite?

2 pairs of adj.  
 $\cong$  sides

Think:

Why is  $\angle A \cong \angle C$ ?

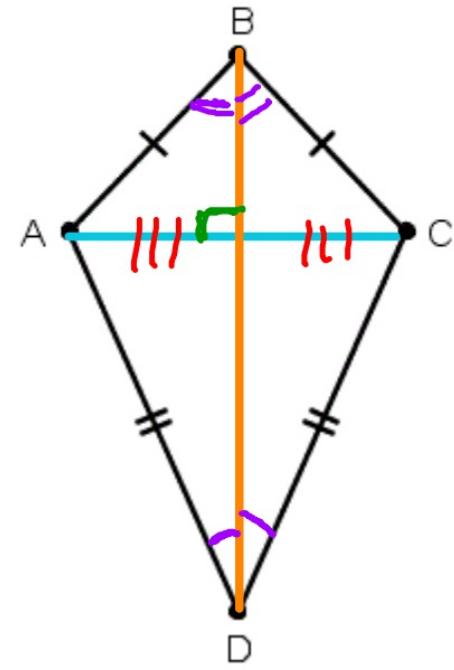


Key facts about kites: 

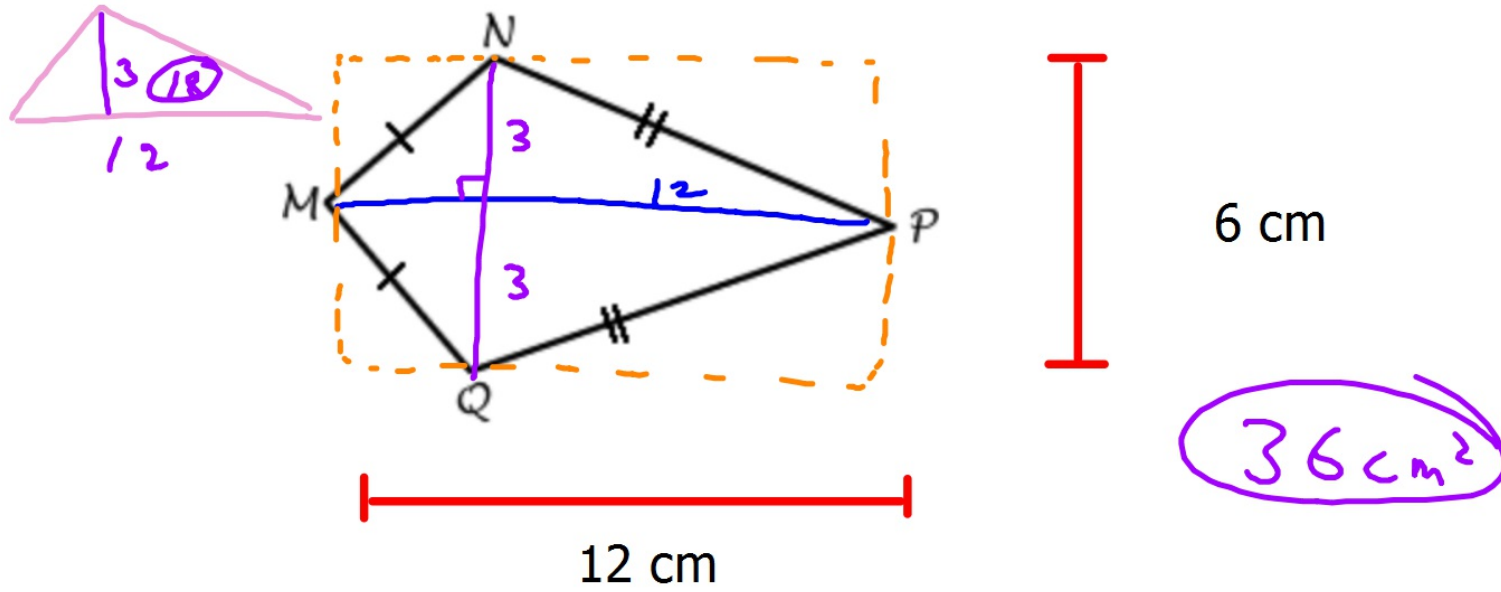
- long diagonal is perp. bisector of short diagonal
- long diagonal is an angle bisector

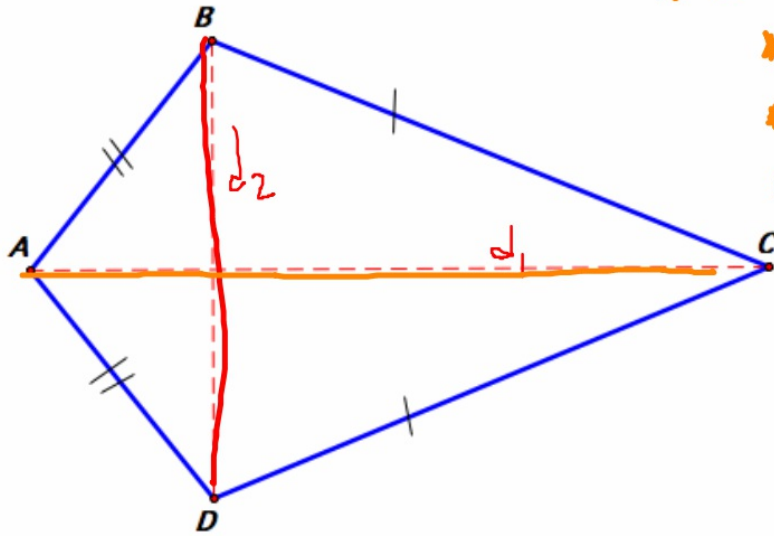
? -

.



Find the area of the kite.





Key facts about kites:

- diagonals are perp. bisectors
- long diagonal is an angle bisector
- Area =  $\frac{1}{2} \cdot d_1 \cdot d_2$

# Practice Assessment