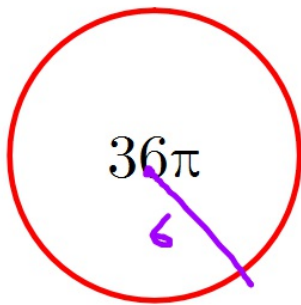


Good afternoon: warm up in notebooks

$$C = 2\pi r \quad A = \pi r^2$$

Find the circumference of a circle with area  $36\pi \text{ cm}^2$



$$C = 2\pi \cdot 6$$
$$12\pi$$
$$\approx 37.7 \text{ cm}$$

$$\frac{36\pi}{\pi} = \frac{\pi r^2}{\pi}$$
$$\sqrt{36} = \sqrt{r^2}$$
$$\underline{\underline{6}} = r$$

Reminders: Reassess DS Mon/Thu/Fri ; Tutoring Weds  
next assessment: Monday 2/13

p475 hw

1  $36\pi$  or  $113.1 \text{ in}^2$

2 C

3 1885 ft

4 D

5 C

6  $64\pi \text{ in}^2$

11  $12.6 \text{ m}^2$

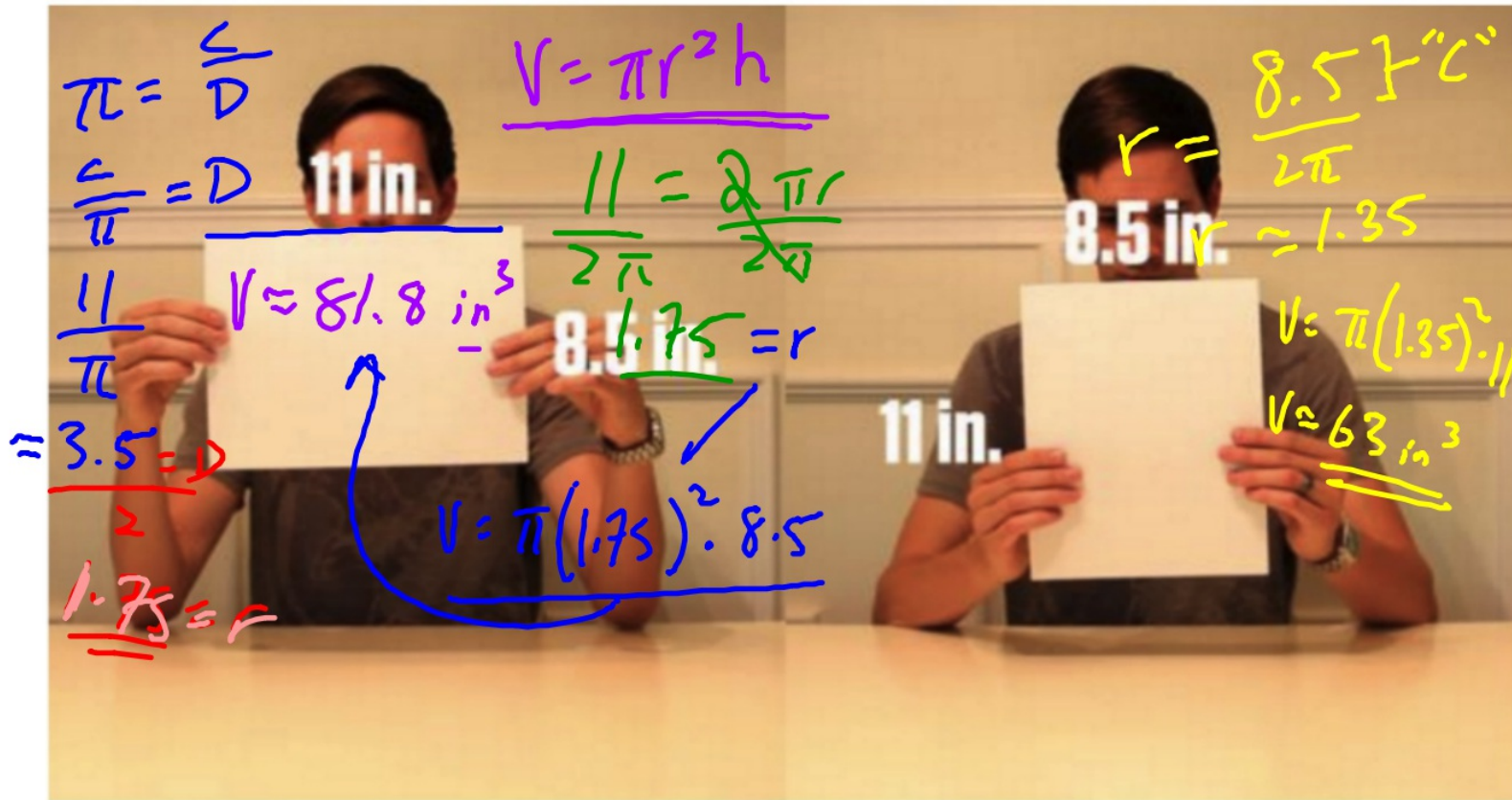
Which tube holds more popcorn? Write down your guess



Wide

Tall

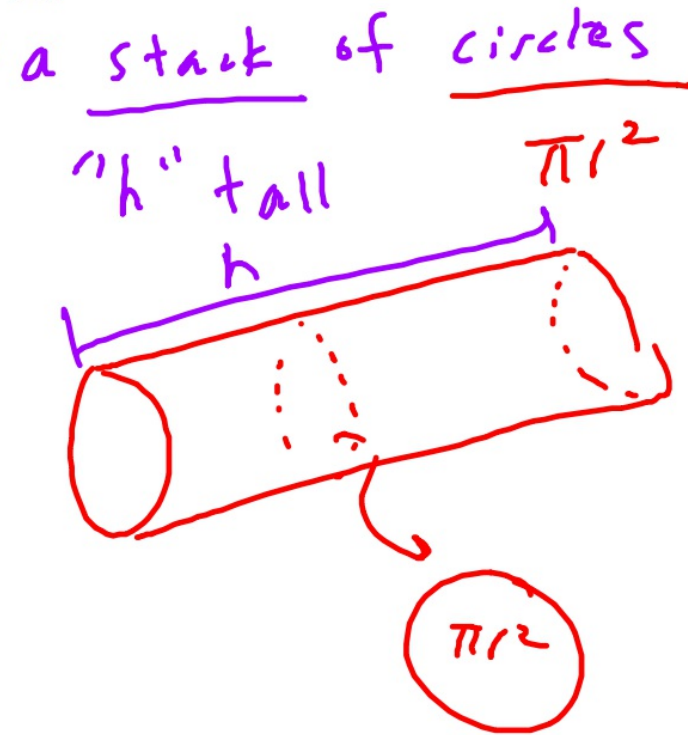
Which tube holds more popcorn? Support your answer with numbers!!



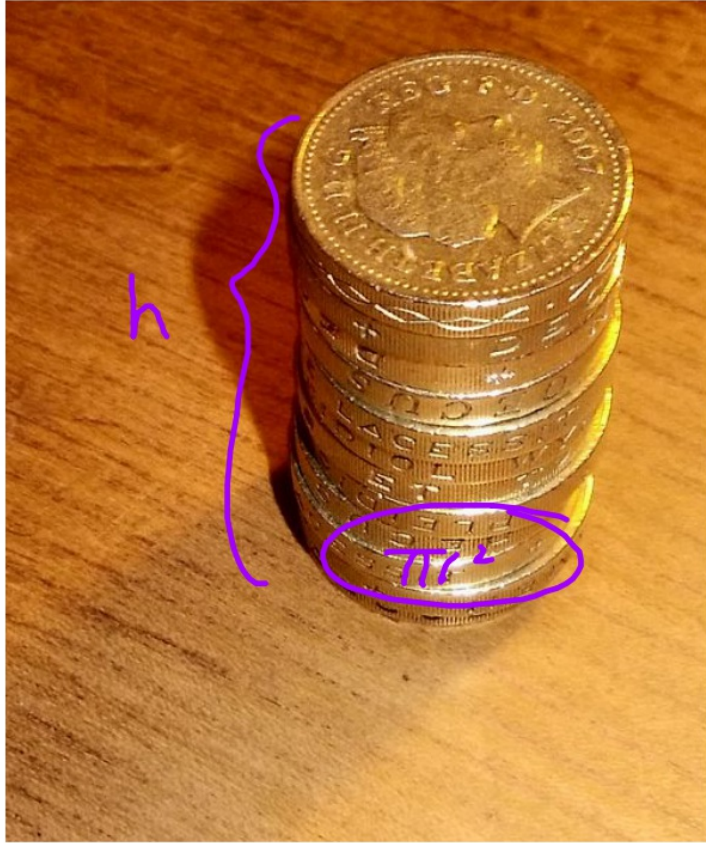
wide

tall

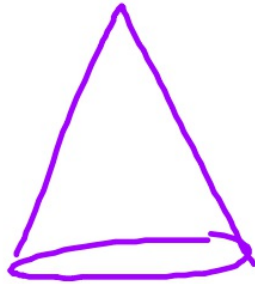
Why is volume of a cylinder  $\pi r^2 h$ ?



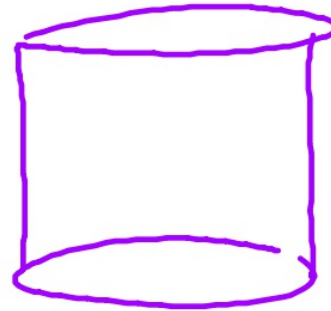




Volume of a cone??  $V = \frac{1}{3} \pi r^2 h$



cone.



cyl.

[https://www.youtube.com/watch?v=QnVr\\_x7c79w](https://www.youtube.com/watch?v=QnVr_x7c79w)

## Homework:

- p 477 #1
- Continue memorizing formulae at [bit.ly/formulas17](http://bit.ly/formulas17)

