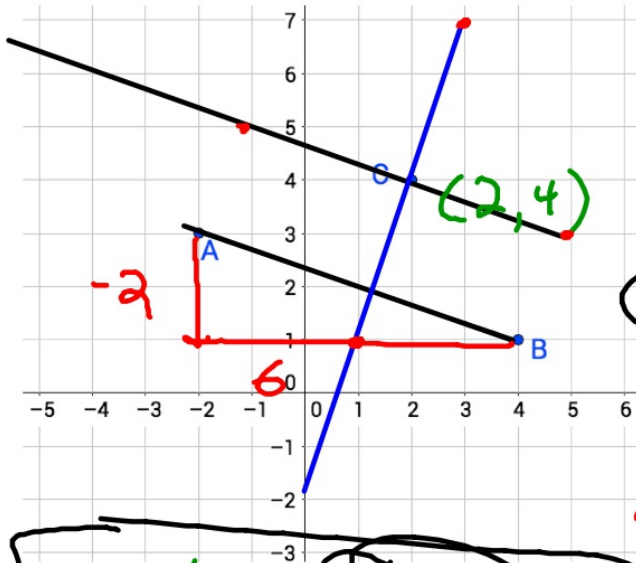


Good afternoon
no warm up, we will check p. 95 hw when bell rings

Reminders:
assessment rescheduled to Monday



Attach graph paper squares to notebooks, then:



1. Write the equation of the line through C, parallel to \overline{AB} . Draw this line.

$$m = -\frac{2}{6} = -\frac{1}{3}$$

$$y - y_1 = m(x - x_1)$$

point-slope

$$y - 4 = -\frac{1}{3}(x - 2)$$

2. Write the equation of the line through C, perpendicular to \overline{AB} . Draw this line.

$$m_{\overline{AB}} = -\frac{1}{3} \perp + \frac{3}{1}$$

$$y - 4 = 3(x - 2)$$

$$y - 4 = 3x - 6$$

$$+4 \quad +4$$

$$y = 3x - 2$$

Practice Assessment

work on your own for the first few minutes
check in with your table for help and assistance



Want/need additional practice? Try these:

p.93 #6-8

p.96 #16-19

p.59 #6, 15-17

HW

finish practice assessment, check with solution guide
at mgeo.weebly.com along with review videos!

assessment is Monday

