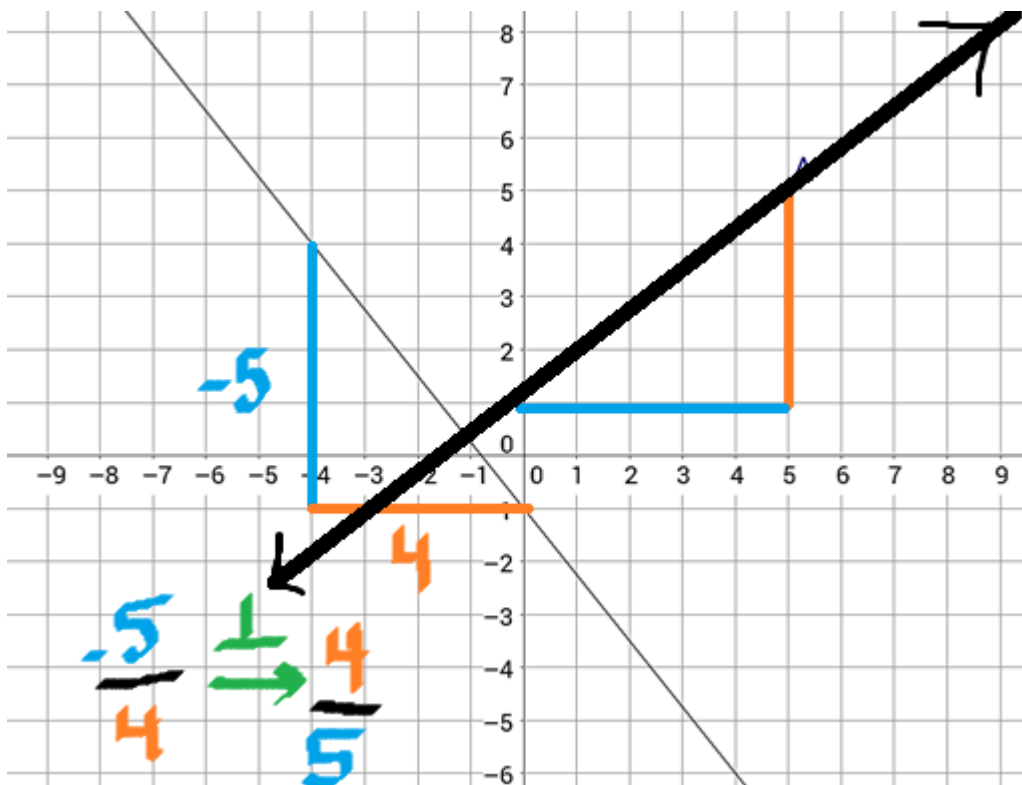
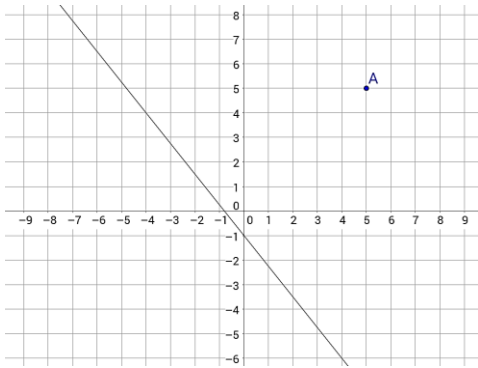


1. Do the following linear equations graph lines that are parallel, perpendicular, or neither? Use numbers to justify your answer.

$$\begin{cases} 3x + 2y = 4 \\ 4x - 6y = -18 \end{cases}$$

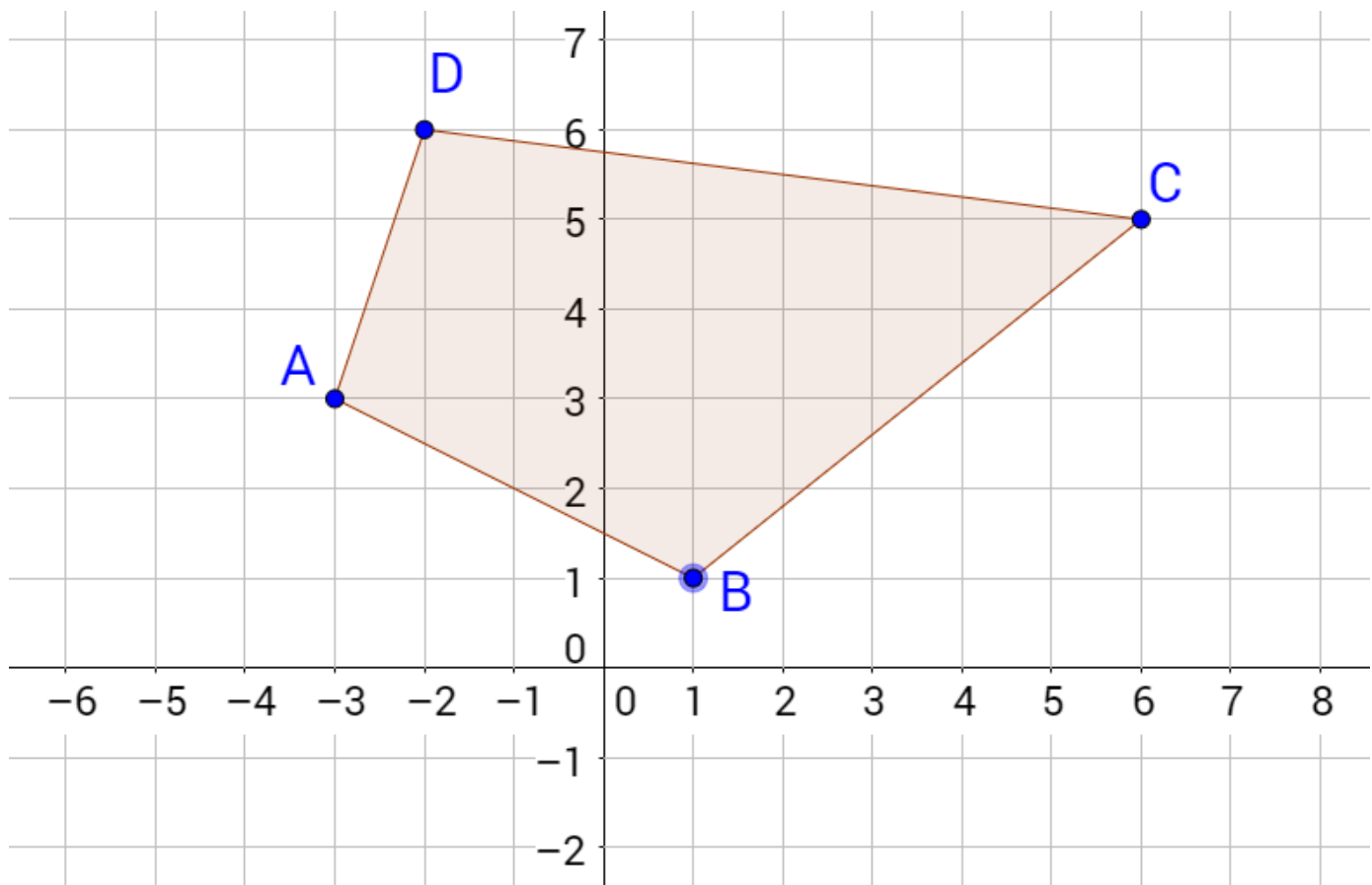
PERPENDICULAR: slope of first line is $-3/2$, second line is $4/6$ which reduces to $2/3$. These are opposite reciprocals

2. Graph a line that is perpendicular to the given line, that passes through the given point.



GPE-B7a

3. Find the perimeter, to the nearest hundredth, of the quadrilateral ABCD. Show all work.



Perimeter: 22.09 units

4. Using the figure above, find the coordinates of the midpoint of \overline{BC} .

Midpoint: (3.5, 3)